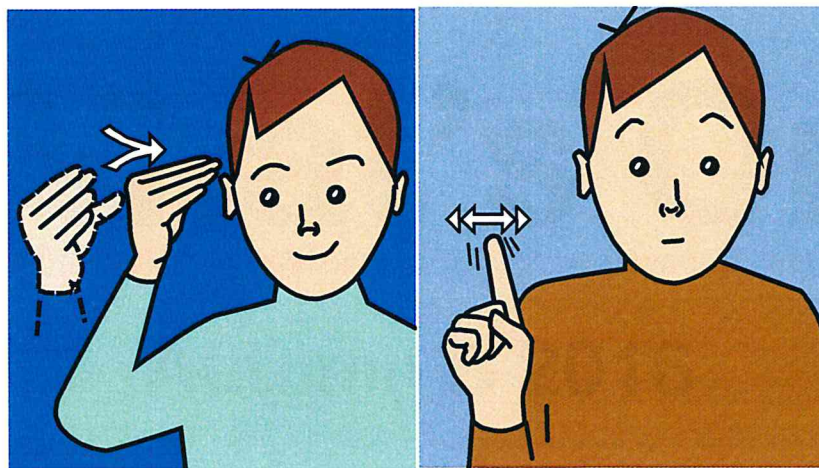


Longwill

a primary school for Deaf children

What's On

Autumn B 2016



Welcome back!

We hope you have all had a wonderful half term holiday and that the children are ready to have lots of fun with their learning over the next few weeks!

This term our topic is 'Celebrations'. We will start by learning about the changes that are happening in the natural environment at this time of year as we move from Autumn to Winter. We will think about what we can see and what we can feel and how the changes in the seasons affect us.

We will then move on to learn about the celebrations that take place during this season such as Bonfire Night and Christmas and these will link in with our Wonderful Wednesday show and tell sessions. A separate letter will come out to you with details of what we would like the children to bring in each week, but we will start with talking about what we did in the holidays and sharing our photographs on the children's PSPs.

Reception will also be sharing the story of 'The Snowman' and we will be using this to learn more about how stories are structured - What happened first? What happened next?

In maths we will continue to develop the children's knowledge of number through songs, stories and practical activities. In particular we will be focusing on separating groups of objects in different ways and seeing how the total is still the same. We will also continue to develop our knowledge of measurement and shape by learning about how to use scales to measure weight and the shapes diamond and semi-circle.

P.E. will take place on a Thursday morning and we will focus on gymnastics and learning about the different ways we can balance and roll. We will also be having dance lessons with a specialist dance teacher every Tuesday morning.

This half term we will continue to have gardening every Monday morning. Please can you make sure that your children bring a suitable coat to school on these days - appropriate for the weather.

Thank you in advance for all your support and we look forward to working with you!

The Nursery Team

This half term we will be continuing with the topic "All About Me".

In English we will be studying 'Beauty and the Beast' in preparation for our theatre visit in December. Also we will be learning about writing letters. In Maths, we will be looking at measurement - length and weight and also we will learn about time.

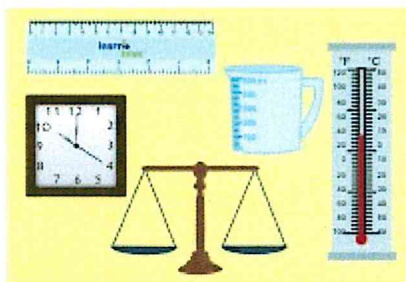
In Science, we will continue with 'Animals including Humans'. This term we will focus on healthy eating, exercise and hygiene. In History, we will be comparing lives and work of Florence Nightingale and Edith Cavell, and why they are famous nurses.

For RE, the theme is *Creativity* and we will be visiting a church in November. In PSHE, we will be looking at friendships and raising awareness of bullying. In Computing we will be looking at uses of information technology outside school.

PE continues on Mondays and children will need their PE kit (shorts, t-shirt and pumps). Swimming is on Fridays and children will need a swimming costume or swimming trunks and a towel. Dance lessons will be on Tuesdays. We will be doing gardening fortnightly on Mondays. We will be cooking fortnightly. Also we will be making and selling sweets as part of Tycoon in Schools.

Photographs and videos from home on PSPs will help pupils to share their news from home especially weekend news.

Home Learning will be given out on Fridays and needs to be returned to school on Wednesdays. Children will read regularly and please share and discuss stories with your child, and read with them regularly.



This half term we will be continuing our topic of 'Ancient Greece', focusing more on the history side. We will be using pictures and artefacts to learn about the past. In English we will look at more Greek Myths such as 'The Horse of Troy'.

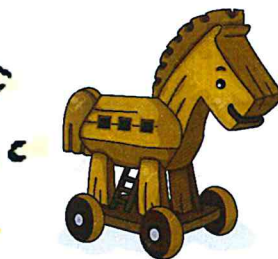
P.E. will continue to be on a **Monday** and **Tuesday**, please make sure your child has their kit in school for the whole week as we also do a multi-skills club on Wednesday lunchtime. Swimming will continue to be every **Friday**, please make sure their costume, towel and bag are labelled and in school every week. We will be doing gymnastics which will link nicely with the Greek Olympics; who will get to wear the winner's wreath? We will also look at different styles of Greek dancing.

In November we will be going to the History Museum in Birmingham to look at the Ancient Greek exhibition, whilst there we will visit the German market to look for inspiration for our design and technology week, which will have a textiles focus.

In PSHE we will be learning about respecting and protecting the environment. We will be having a theatre group visit us to teach us about the melting polar ice caps.

Home-learning will be set on a Friday and will be expected back the following Tuesday, spellings will also be set and tested on Fridays. We would really like children to become confident writers and knowing how to spell key words is critical. Please Send in photos via the PSP, as the children love sharing them and looking at them.

Mrs Plews, Mrs Russell & Mrs Sheppard



This half term, we will be learning all about the rainforests.

We will be learning where they are, what animals and plants live there and all about the history of the Mayan civilisation.

We will be working as scientists and explorers to work out how people lived in that environment and how we are damaging the rainforests today.

We have some exciting events coming up this half term with the gymnastics festival and preparations for Christmas.

We will also be doing some exciting learning about the sculptures and structures made by the Mayans in the rainforests. We will be building some of our own monuments in the same style using a variety of materials.



We will use our computing skills to make an animation about the importance of the rainforest and what will happen if we continue to destroy them.

Thank you for your support with the children's home learning and reading. P.E. will still be on a Wednesday afternoon while they prepare for the Gymnastic festival and swimming will be on Friday mornings.

Each Monday, during English Year 5 share their weekend news with the class. It is so important that the children have pictures or videos to support their recounts of the weekend activities at home. Please support your child in remembering to take a few photos or videos during the weekend. We intend to encourage the children's independence in understanding it is their responsibility to remember to use their PSP at weekends. Each week the children will be given a PSP challenge to complete at home. During English on Tuesday to Friday the children will be learning the difference between command, statements and questions. They will be using this knowledge to write diaries pretending to be an Emperor or soldier invading Britain.

During Maths we will focus on measuring time. We begin by immersing ourselves in the language relating to dates, including days, weeks, months and years. The children will use their own daily and weekly timetables to learn how to sequence events in chronological order. The children have the challenge this half term of learning how to tell the time. Please encourage your child to check the clock in your house and discuss telling the time to the hour, half past the hour and quarter to/quarter past. If your child becomes confident in telling the time you could ask to tell the time to five minutes. Ask daily questions such as, "What time do we have dinner?" or "The bus arrives in half an hour what time will that be?"

In Science we shall be describing the differences in the life cycles of a mammal, an amphibian, an insect and a bird. The children will be finding information from a variety of sources. We will make notes from nature videos, draw lifecycles, use graphs to compare information and send Birmingham Wildlife Conservation Park an email asking questions to find out about animal lifecycles. Many of the children have developed an interest in discovering more about the different animal groups and we now have a variety of books and magazines to encourage this new interest. The children will focus an investigation on the life cycle of mammals, specifically humans. A health visitor has been invited to talk with the children about how we track a babies weight and height and the reasons for this. We will measure the height of a variety of age groups throughout school and draw conclusions from the results.

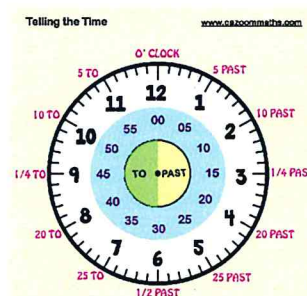
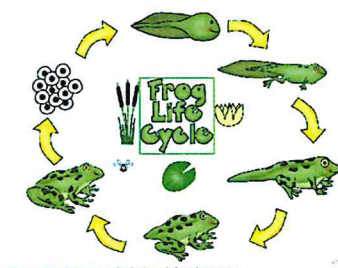
In Art we continue to explore sketching using different materials, we will be learning how to use chalk and charcoal also pen and ink to sketch buildings. Our sketches will focus on Birmingham's skyline and architecture. The children will now use Stephen Wiltshire's photorealistic drawings to inspire them. In RE we will focus on how festivals are celebrated. We are looking forward to our annual whole school Christmas workshop. The children will explore what is the true meaning of Christmas to Christians. We continue to learn how to recognise the different faiths and the symbols used. We welcome any photos in class related to RE.

Our learning journey will continue to be based on the Romans. We have discovered where Rome is and what Roman soldiers looked like. We will now learn about where the Romans invaded, including Britain and what impact they have had on our lives today. We will look at language, buildings and customs.

If you would like to support your child's learning further at home please use the following websites / activities:

<http://www.bbc.co.uk/education/topics/z4ffr82> - life cycles

www.mathletics.co.uk



We are halfway through our Learning Journey which is all about studying different environments. We will build upon our learning about maps when we explore the Bournville area. We will be comparing maps of Bournville from the middle of the nineteenth century to the present day to help us understand how this area has grown and developed. At the same time we are going to learn about the lives of the Cadbury brothers and their vision of improving the environment and therefore the lives of their employees. This will lead into a brief study of the impact of people like Julia Varley and Emily Pankhurst who were particularly concerned about the rights of women, including their right to vote.

A theatre group is coming into school with a production about how the activity of humans is affecting the polar environment. The theatre company would like our pupils to discuss the drama and how effective it is for a deaf audience because they will use their comments and ideas to change their performance before it goes on tour nationally. This is a very exciting opportunity for all our KS2 pupils.

Our Science lessons will help us to understand light and its properties. This links well with our learning in RE where we will be thinking about celebrations such as Divali, Hanukkah and Christmas where light is a central theme. We shall be doing gymnastics in PE

This is such an exciting half term for our pupils when we prepare for and enjoy activities linked to Christmas. So we are looking forward to our annual trip to the pantomime and to the Longwill Christmas production which you are all invited to.

Home Learning will be given every Friday to be handed in on Monday morning. Please do continue to support your child with their Home Learning, especially with their reading and spellings.

